

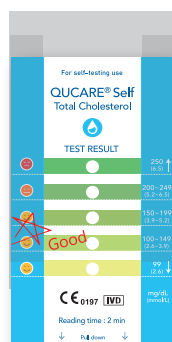
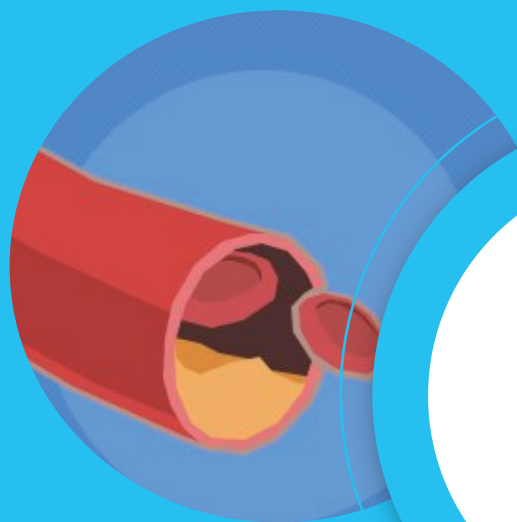
QUCARE[®] Self Total Cholesterol

Simple & Quick Total Cholesterol Test

QUCARE Self Total Cholesterol Test is a simple and easy-to-use test kit without any instrument.

It is a screening test to provide a total cholesterol level for everyone **in 2 minutes** at anytime and anywhere.

Keep a healthy lifestyle with a quick test.



Easy use

Anytime Anywhere
(Not required to send sample to Lab)



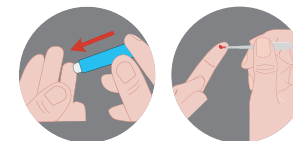
Simple way
without instrument



Quick test
in 2 minutes

How to use a test kit

Step 1)
Prick your finger and get a blood sample (only 10uL)



Step 2)
Apply the blood sample and wait 2 minutes.



Step 3)
Turn over the test kit and check the result.



Scan Me



Accurate test

Correlation matching rate : 98%



Easy



Simple



Quick

Product Specification

CE 0197

Test	Total Cholesterol
Ref no.	6407 (2 tests per kit)
Measuring range	100-250 mg/dl(2.6 ~6.5 mmol/l)
Specimen	Capillary whole blood
Test Time	2 minutes
Sample Volume	10 uL(Capillary included)

How often should a cholesterol test be done?

The American Heart Association recommends that **all adults 20 or older have a cholesterol test checked every 4 to 6 years.**

Some people who have heart disease or diabetes or family history of high cholesterol need to get their cholesterol checked more often.

What is your cholesterol test result meaning?

The guidelines of the National Cholesterol Education Program (NCEP) indicate that **all results of 200mg/dL or greater should be repeated** by a quantitative laboratory method before a diagnosis of hypercholesterolemia is made.



388-25, Gomo-ro, Jillye-myeon, Gimhae-si, Gyeongsangnam-do, Korea
Home page : www.dficare.com E-mail : info@dficare.com
TEL : +82-55-346-1882